

# Broadband High Power Amplifier

Product Name : RCA90100H52A, Code Name :MK16090001

Doc. Name : General Spec.

---

<p style="text-align: center;"><b>General Specification</b> for <b>RCA90100H52A</b></p>
---

1

---

**RESTRICTION ON USE, DUPLICATION, OR DISCLOSURE OF PROPRIETARY INFORMATION**

This document contains proprietary information, which is the sole property of RFcore co., LTD.

The document is submitted to the recipient for his use only.

By receiving this document the recipient undertakes not to duplicate the documents or to disclose in part of, or the whole of, any of the information contained herein to any third party without receiving before hand, written permission from the submitting company.

Created	Printed	Document Number	Revision	Manufacturer
2014/10/22	2016/9/21		D	<b>RFcore co.,Ltd</b>
File : xxxx General Spec.docx				

*The Specifications is subject to change before finalization*

Customer Service: Tel. 82-31-708-7575

Email: sales@rfcore.com

<http://www.rfcore.com>

# Broadband High Power Amplifier

Product Name : RCA90100H52A, Code Name :MK16090001

Doc. Name : General Spec.

ELECTRICAL SPECIFICATIONS		@ 50 Ohms load, Tc = 35 °C
Parameter	Specification	Remark
Frequency Range	9.0 ~ 10.0 GHz	
Pulsed Saturated Output Power	150W Typical, 100W min. Do not exceed 40W average output power.	Maximum PW : 200us Maximum Duty : 15%
Small Signal Gain	63dB Typical (TBD)	Input = -15dBm
Gain Flatness	± 2 dB (TBD)	Input = -15dBm
Input Power for no damage	5dBm max	
Input VSWR	Less than 2 : 1, 1.5:1 typical	
Maximum Output Load Condition for survival	Infinite VSWR	Isolator included
DC Input Voltage	40V	
Quiescent Current	3.0A Typical	
DC Power Consumption	200W MAX @ 100W Pulsed output	TBD 15% Duty
RF Input Signal Format	Pulse Maximum PW : 200us Maximum Duty : 15%	
Over Temperature Protection	Alarm & Shutdown @ 60~70°C Auto restart @ 50~60°C	

2

Created	Printed	Document Number	Revision	Manufacturer
2014/10/22	2016/9/21		D	<b>RFcore co.,Ltd</b>
File : xxxx General Spec.docx				

The Specifications is subject to change before finalization

Customer Service: Tel. 82-31-708-7575

Email: sales@rfcore.com

http://www.rfcore.com

# Broadband High Power Amplifier

Product Name : RCA90100H52A, Code Name :MK16090001

Doc. Name : General Spec.

I/O & DC Interface		
Connector	Description	Specification
D-SUB 9pin Male	1. Enable (Active low)	(Enable = 0V, Disable = 5V) pull-up @ 5V with 51kohm
	3. Over Temp. Alarm	Alarm & Shutdown : High(5V) @ case temp. 65 ± 5°C Auto Restart : LOW(0V) @ case temp. 55 ± 5°C
	5. Temperature Monitor	VT= 10(mV) * Tc(°C) + 500(mV), Tc = Case Temperature ± 5°C
	2, 4, 6, 7 : N.C	
	8, 9 : GND	
3W3P	A1. Vcc	
	A2. GND	
	A3. N.C	

## ENVIRONMENTAL SPECIFICATIONS

Parameter	Specification	Remark
Operating Case Temperature	0 ~ +55 °C	@ Baseplate

## MECHANICAL SPECIFICATIONS

Parameter	Specification	Remark
Dimension	279.3 X 173.4 X 25 mm	
RF Input Connector	SMA Female	
RF Output Connector	N-type Female	
I/O Interface Connector	D-SUB Male	
DC Input Connector	3W3P	
Cooling	Adequate Heat-sink required	

Created	Printed	Document Number	Revision	Manufacturer
2014/10/22	2016/9/21		D	<b>RFcore co.,Ltd</b>
File : xxxx General Spec.docx				

The Specifications is subject to change before finalization

Customer Service: Tel. 82-31-708-7575

Email: sales@rfcore.com

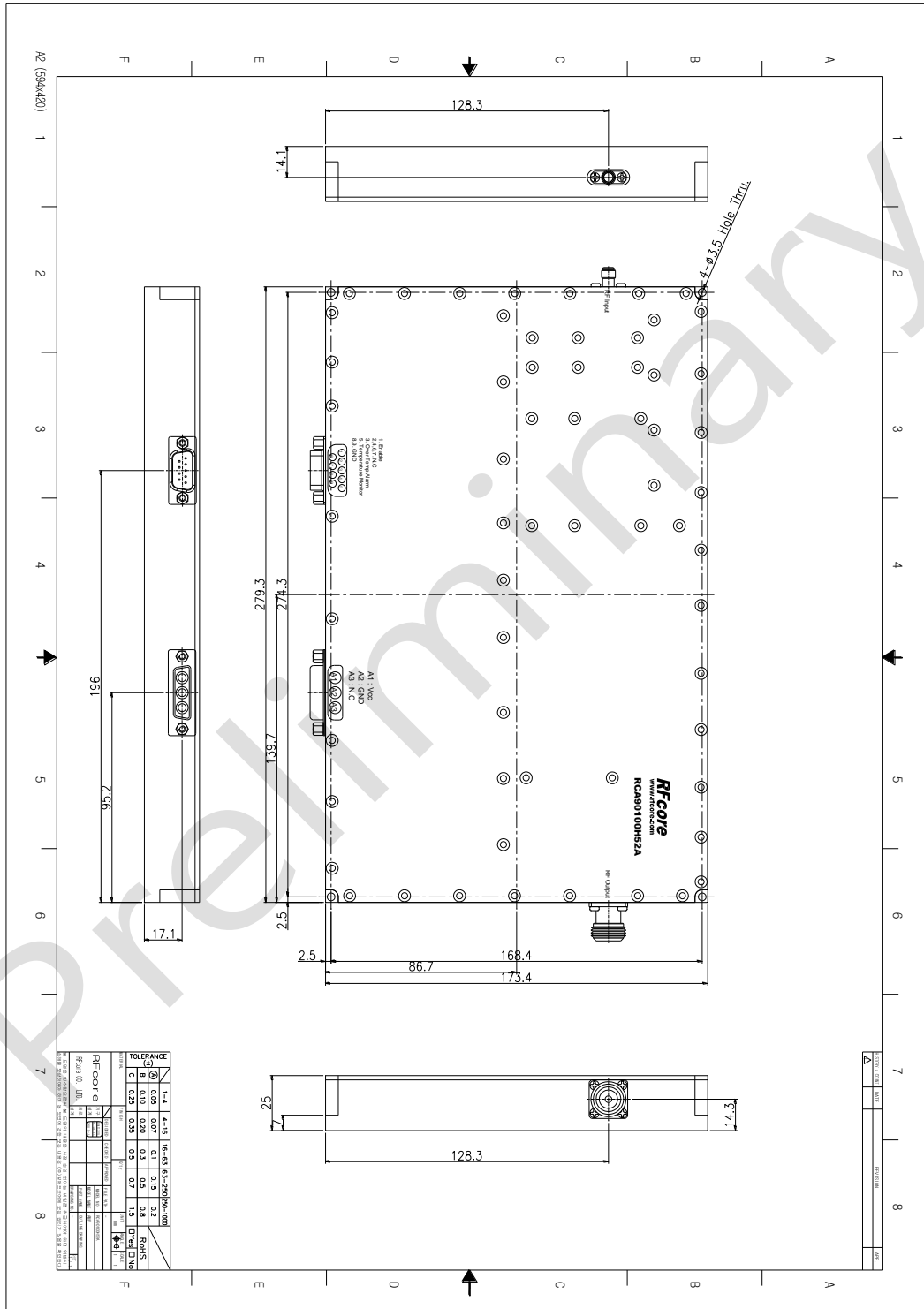
http://www.rfcore.com

# Broadband High Power Amplifier

Product Name : RCA90100H52A, Code Name :MK16090001

Doc. Name : General Spec.

## MECHANICAL DRAWING



Created	Printed	Document Number	Revision	Manufacturer
2014/10/22	2016/9/21		D	<b>RFcore co.,Ltd</b>
File : xxxx General Spec.docx				

The Specifications is subject to change before finalization

Customer Service: Tel. 82-31-708-7575

Email: sales@rfcore.com

http://www.rfcore.com