

# Band-Specific High Power Amplifier

Product Name : RCA1822H44B, Code Name :

Doc. Name : General Spec.

---

<p style="text-align: center;"><b>General Specification</b> for <b>RCA1822H44B</b></p>
--

1

<p style="text-align: center;"><b>RESTRICTION ON USE, DUPLICATION, OR DISCLOSURE OF PROPRIETARY INFORMATION</b></p>
---

This document contains proprietary information, which is the sole property of RFcore co., LTD.

The document is submitted to the recipient for his use only.

By receiving this document the recipient undertakes not to duplicate the documents or to disclose in part of, or the whole of, any of the information contained herein to any third party without receiving beforehand, written permission from the submitting company.

Created	Printed	Document Number	Revision	Manufacturer
2014/7/10	2017/2/6		A	<b>RFcore co.,Ltd</b>
File : RCA1822H44B General Spec.docx				

*The Specifications is subject to change before finalization*

Customer Service: Tel. 82-31-708-7575

Email: [sales@rfcore.com](mailto:sales@rfcore.com)

<http://www.rfcore.com>

# Band-Specific High Power Amplifier

Product Name : RCA1822H44B, Code Name :

Doc. Name : General Spec.

ELECTRICAL SPECIFICATIONS		@ 50 Ohms load, 27 Vdc, Tc = 35 °C
Parameter	Specification	Remark
Frequency Range	1787 ~ 2170 MHz	
Saturated Output Power	44 dBm min.	@ CW
Small Signal Gain @ Center frequency	40 ± 1.5 dB	Input level = -15dBm
Small Signal Gain Flatness	Peak to Peak 3.0 dB	Input level = -15dBm
Maximum Input Power for no damage	5 dBm max.	
Input VSWR	Less than 1.5 : 1	
Output VSWR	Less than 1.5 : 1	
DC Input Voltage	27 ± 1.0 Vdc	
Current Consumption	3.5 A max. 3 A typ.	@ Pout = 44dBm
I/O Interface(D-Sub 9Pin Male)	1. Temperature Monitor	VT = 0.02*Tc + 1.0 (V) Tc is Case Temperature in degC ± 5°C
	2. Forward Power Monitor	4.0±0.2@44dBm, slope : 0.1V/dB Vpin2 = 4.0-(44-Pout)x0.1±0.2V
	3. GND	
	4. Reflected Power Monitor	Diode Detector
	5. VSWR Fail Alarm	Alarm : TTL High Reflected power = 38~41dBm (Vpin4=1.4±0.1V) @Fcenter
	6. Vcc	
	7. Vcc	
	8. GND	
	9. Enable(Active Low)	Pulled-up @ 5V with 10kohm

## ENVIRONMENTAL SPECIFICATIONS

Parameter	Specification	Remark
Operating Case Temperature	-20 ~ +70 °C	
Storage Temperature	-40 ~ +85 °C	

## MECHANICAL SPECIFICATIONS

Parameter	Specification	Remark
Dimension	110 * 90 * 22 mm	
Input / Output Connector	SMA Female	
Control Connector	D-Sub 9Pin Male	
Cooling	Adequate Heat-sink required	

Created	Printed	Document Number	Revision	Manufacturer
2014/7/10	2017/2/6		A	<b>RFcore co.,Ltd</b>
File : RCA1822H44B General Spec.docx				

The Specifications is subject to change before finalization

Customer Service: Tel. 82-31-708-7575

Email: sales@rfcore.com

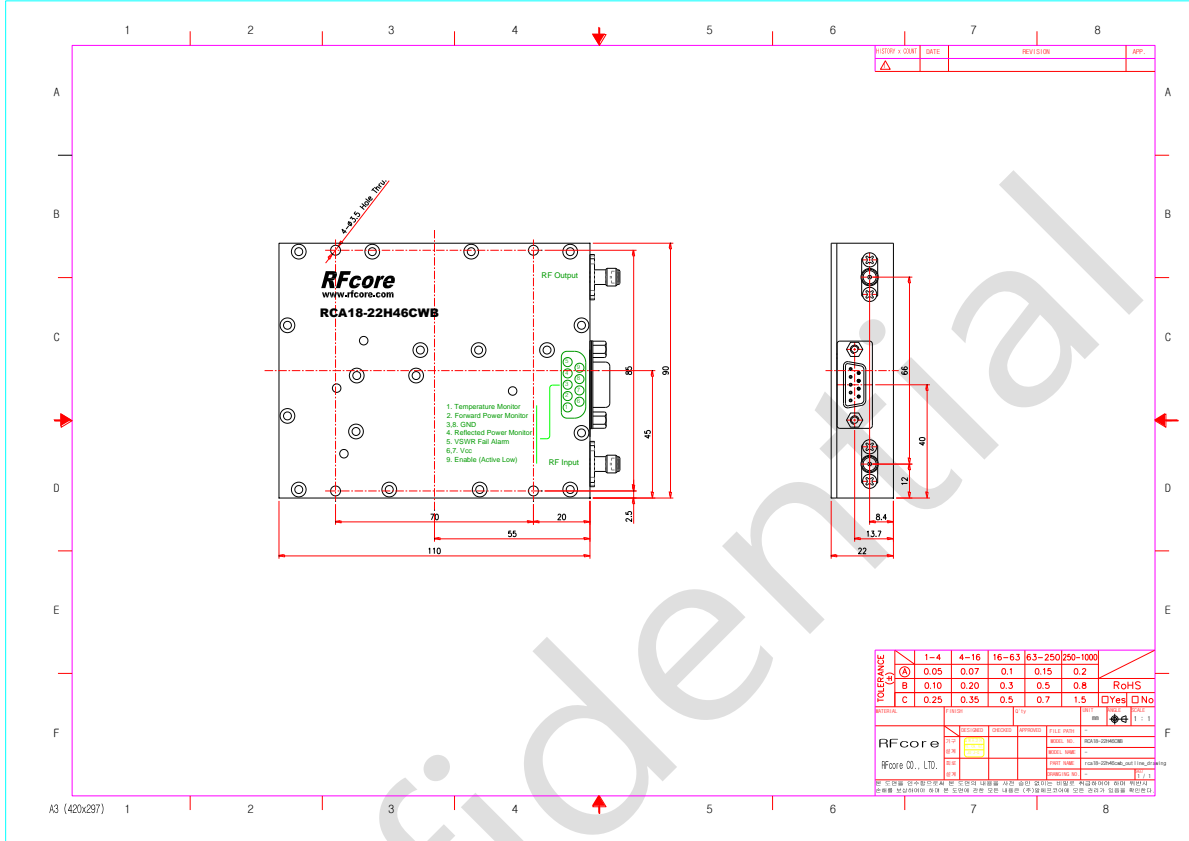
http://www.rfcore.com

# Band-Specific High Power Amplifier

Product Name : RCA1822H44B, Code Name :

Doc. Name : General Spec.

## MECHANICAL DRAWING



3

Created	Printed	Document Number	Revision	Manufacturer
2014/7/10	2017/2/6		A	<b>RFcore co.,Ltd</b>
File : RCA1822H44B General Spec.docx				

The Specifications is subject to change before finalization

Customer Service: Tel. 82-31-708-7575

Email: sales@rfcore.com

http://www.rfcore.com