

Broadband High Power Amplifier

Product Name : RCA4450H44C1, Code Name :

Doc. Name : General Spec.

<p style="text-align: center;">General Specification for RCA4450H44C1</p>

1

<p style="text-align: center;">RESTRICTION ON USE, DUPLICATION, OR DISCLOSURE OF PROPRIETARY INFORMATION</p>

This document contains proprietary information, which is the sole property of RFcore co., LTD.

The document is submitted to the recipient for his use only.

By receiving this document the recipient undertakes not to duplicate the documents or to disclose in part of, or the whole of, any of the information contained herein to any third party without receiving before hand, written permission from the submitting company.

Created	Printed	Document Number	Revision	Manufacturer
2018/4/23	2018/9/5		D	RFcore co.,Ltd
File : RCA4450H44C1 General Spec.docx				

The Specifications is subject to change before finalization

Customer Service: Tel. 82-31-708-7575

Email: sales@rfcore.com

<http://www.rfcore.com>

Broadband High Power Amplifier

Product Name : RCA4450H44C1, Code Name :

Doc. Name : General Spec.

ELECTRICAL SPECIFICATIONS		@ 50 Ohms load, 28 Vdc, Tc = 35 °C
Parameter	Specification	Remark
Frequency Range	4400 ~ 5000 MHz	
Saturated Output Power	43 dBm min.	
Small Signal Gain	45 dB min.	Pin = -15 dBm
Small Signal Gain Flatness	± 1.5 dB	Pin = -15 dBm
Maximum Input Power for no damage	7 dBm	
Input VSWR	Less than 1.8 : 1	
Output VSWR	Less than 1.8 : 1	Built in Isolator (Isoaltion>16 dB)
Maximum load VSWR for amplifier survival	Infinite, all phase	@ Pout = 40 dBm CW, Tc = 70°C
DC Input Voltage	28 ± 1 Vdc	
Current Consumption	3.5 A typ. 4.0 A max.	@ Pout = 43 dBm CW
RF Input Format	CW	

2

I/O Interface		
Pin No.	Description	Specification
1	Enable(Active Low)	(Enable = 0V, Disable = 5V) pull-up @ 5V with 10k ohm
2,3,4	N.C	Do not connect
5	Temperature Monitor	VT= 10(mV) * Tc(°C) + 500(mV), Tc = Case Temperature ± 5°C
6,7	Vcc	
8,9	GND	

Created	Printed	Document Number	Revision	Manufacturer
2018/4/23	2018/9/5		D	RFcore co.,Ltd
File : RCA4450H44C1 General Spec.docx				

The Specifications is subject to change before finalization

Customer Service: Tel. 82-31-708-7575

Email: sales@rfcore.com

http://www.rfcore.com

Broadband High Power Amplifier

Product Name : RCA4450H44C1, Code Name :

Doc. Name : General Spec.

ENVIRONMENTAL SPECIFICATIONS

Parameter	Specification	Remark
Operating Case Temperature (Tc)	-20 ~ 70 °C	At a hottest point of the mechanical case of amplifier module
Storage Temperature (Ts)	-40 ~ 85 °C	

MECHANICAL SPECIFICATIONS

Parameter	Specification	Remark
Dimension	156 * 85 * 20 mm	w/o connectors
Weight	Less than 450 g	
RF Input / Output Connector	SMA Female	
I/O Interface Connector	D-Sub 9Pin Male	
Cooling	Adequate Heat-sink required	

Created	Printed	Document Number	Revision	Manufacturer
2018/4/23	2018/9/5		D	RFcore co.,Ltd
File : RCA4450H44C1 General Spec.docx				

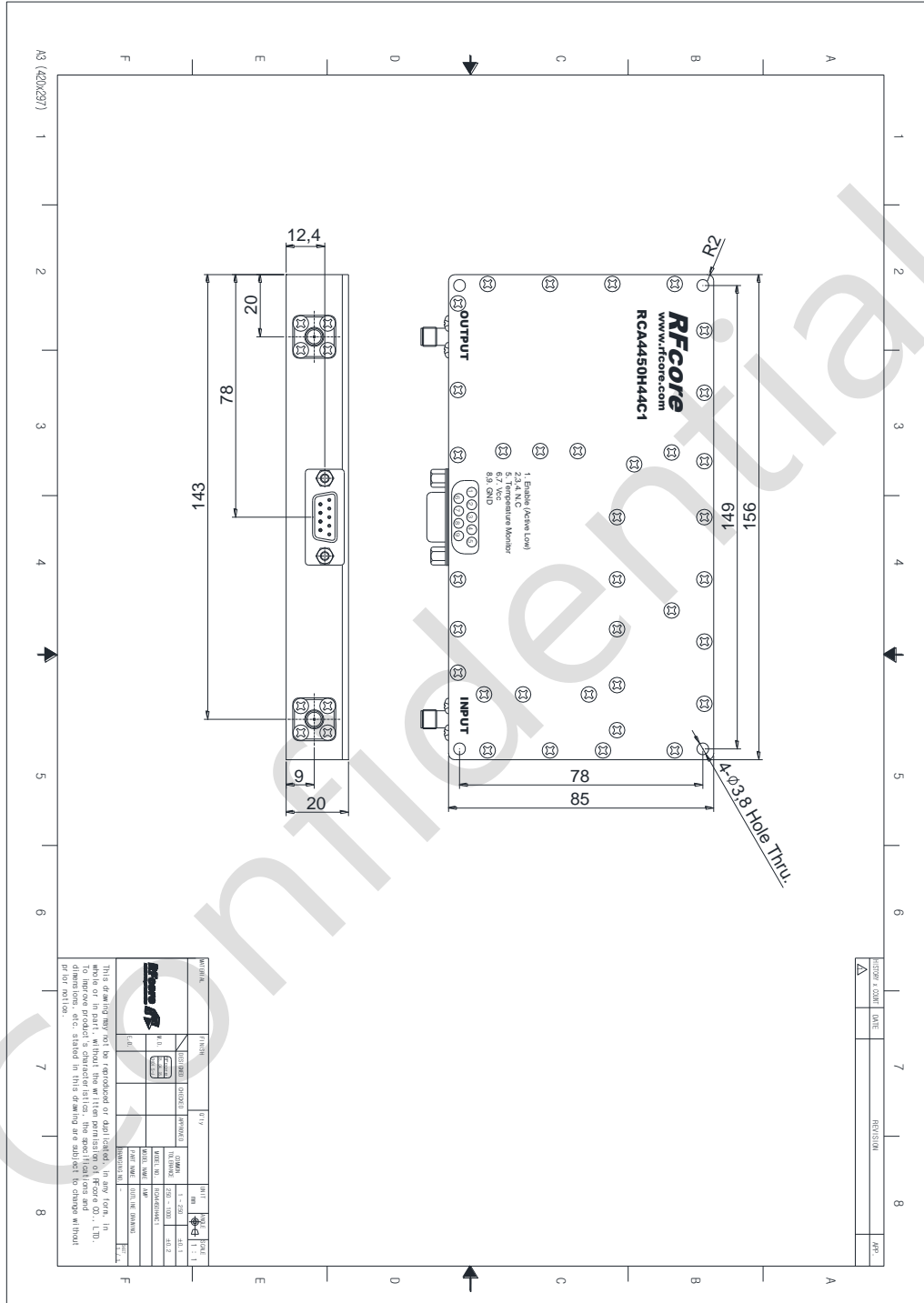
The Specifications is subject to change before finalization

Broadband High Power Amplifier

Product Name : RCA4450H44C1, Code Name :

Doc. Name : General Spec.

MECHANICAL DRAWING



DRAWING REFERNECE: This is subject to change without notice.

Created	Printed	Document Number	Revision	Manufacturer
2018/4/23	2018/9/5		D	Rfcore co.,Ltd
File : RCA4450H44C1 General Spec.docx				

The Specifications is subject to change before finalization

Customer Service: Tel. 82-31-708-7575

Email: sales@rfcore.com

http://www.rfcore.com