

# Broadband High Power Amplifier

Product Name : RCA0530H50E

Doc. Name : General Spec.

---

<p style="text-align: center;"><b>General Specification</b> for <b>RCA0530H50E</b></p>
--

1

---

<p style="text-align: center;"><b>RESTRICTION ON USE, DUPLICATION, OR DISCLOSURE OF PROPRIETARY INFORMATION</b></p> <p>This document contains proprietary information, which is the sole property of RFcore co., LTD. The document is submitted to the recipient for his use only. By receiving this document the recipient undertakes not to duplicate the documents or to disclose in part of, or the whole of, any of the information contained herein to any third party without receiving beforehand, written permission from the submitting company.</p>
--

Created	Printed	Document Number	Revision	Manufacturer
2016/2/2	2017/1/12		B	<b>RFcore co.,Ltd</b>
File : RCA0530H50E General Spec.docx				

*The Specifications is subject to change before finalization*

Customer Service: Tel. 82-31-708-7575

Email: sales@rfcore.com

<http://www.rfcore.com>

# Broadband High Power Amplifier

Product Name : RCA0530H50E

Doc. Name : General Spec.

ELECTRICAL SPECIFICATIONS		@ 50 Ohms load, 28 Vdc, Tc = 35 °C
Parameter	Specification	Remark
Frequency Range	500 ~ 3000 MHz	B1: 700 to 2700 MHz B2: 500 to 700 MHz & 2700 to 3000 MHz
Saturated Output Power in B1	50 dBm typ. , 49 dBm min.	@ CW, 50 ohms load
Saturated Output Power in B2	48 dBm typ. , 47 dBm min.	@ CW, 50 ohms load
Small Signal Gain	50 dB min	Input = -15dBm
Gain Flatness in B1	Peak to Peak 6.0 dB	Input = 0dBm
Gain Flatness over whole frequency	Peak to Peak 9.0 dB	Input = 0dBm
Input Power for no damage	7 dBm	
Input VSWR	Less than 2 : 1	
Maximum load VSWR for amplifier working	3.5 : 1	Works with degraded performance.
Maximum load VSWR for amplifier for survival	Infinite, all phase	Take a look video <a href="http://www.youtube.com/watch?v=1kLBxPf4--M">http://www.youtube.com/watch?v=1kLBxPf4--M</a> You can look for this video in youtube.com with keyword 'RFcore' or 'VSWR protection'
On/Off Switching Time	1 usec typ. 2 usec max.	
DC Input Voltage	28 ± 1.0 Vdc	
Current Consumption in B1	14 A max. 10 A typ.	@ Pout = 49 dBm, 50 ohms load
Current Consumption in B2	8 A max. 6 A typ.	@ Pout = 47 dBm, 50 ohms load
RF Input Signal Format	CW	

2

Created	Printed	Document Number	Revision	Manufacturer
2016/2/2	2017/1/12		B	<b>RFcore co.,Ltd</b>
File : RCA0530H50E General Spec.docx				

The Specifications is subject to change before finalization

Customer Service: Tel. 82-31-708-7575

Email: sales@rfcore.com

<http://www.rfcore.com>

# Broadband High Power Amplifier

Product Name : RCA0530H50E

Doc. Name : General Spec.

## Interface Pin Description

Connector	Description	Specification
I/O Interface(7W2)	1. Enable (Active low)	Pulled-up @ 5V with 10kohm
	2. Forward Power Monitor	Logarithmic Detector(0.05V/dB)
	3. VSWR Fail Alarm	TTL HIGH(5V) @ high VSWR VSWR alarm will be activated a certain ratio between 3.5 and infinite VSWR. The alarm is not latched signal.
	4. Reflected Power Monitor	Logarithmic Detector(0.05V/dB)
	5. Temperature Monitor	$VT = 10(mV) * Tc(^{\circ}C) + 500(mV)$ , Tc = Case Temperature $\pm 5^{\circ}C$
	A1. VCC	
	A2. GND	

## ENVIRONMENTAL SPECIFICATIONS

Parameter	Specification	Remark
Operating Case Temperature	-40 ~ +75 $^{\circ}C$	@ Baseplate
Storage Temperature	-40 ~ +85 $^{\circ}C$	

## MECHANICAL SPECIFICATIONS

Parameter	Specification	Remark
Dimension	235 * 87 * 27 mm	
Weight	Less than 1100 g	
RF Input Connector	SMA Female	
RF Output Connector	SMA Female	
DC & I/O Interface Connector	7W2P	
Cooling	Adequate Heat-sink required	

Created	Printed	Document Number	Revision	Manufacturer
2016/2/2	2017/1/12		B	<b>RFcore co.,Ltd</b>
File : RCA0530H50E General Spec.docx				

*The Specifications is subject to change before finalization*

Customer Service: Tel. 82-31-708-7575

Email: sales@rfcore.com

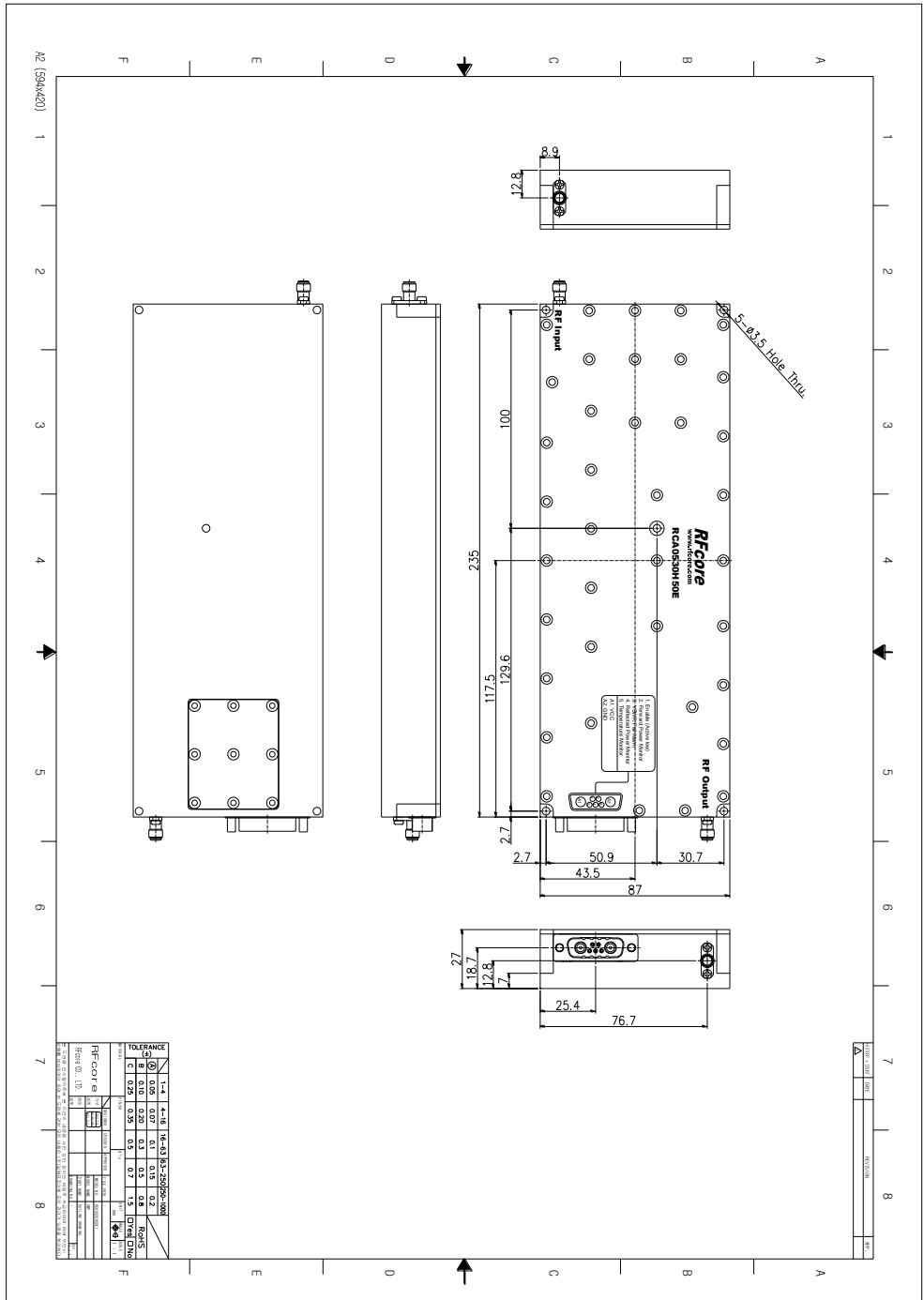
<http://www.rfcore.com>

# Broadband High Power Amplifier

Product Name : RCA0530H50E

Doc. Name : General Spec.

## MECHANICAL DRAWING



DRAWING REFERNECE: This is subject to change without notice.

Created	Printed	Document Number	Revision	Manufacturer
2016/2/2	2017/1/12		B	<b>RFcore co.,Ltd</b>
File : RCA0530H50E General Spec.docx				

The Specifications is subject to change before finalization

Customer Service: Tel. 82-31-708-7575

Email: sales@rfcore.com

http://www.rfcore.com