

Broadband High Power Amplifier

Product Name : RCA19-22H42A

Doc. Name : General Spec.

General Specification for RCA19-22H42A

1

RESTRICTION ON USE, DUPLICATION, OR DISCLOSURE OF PROPRIETARY INFORMATION

This document contains proprietary information, which is the sole property of RFcore co., LTD.

The document is submitted to the recipient for his use only.

By receiving this document the recipient undertakes not to duplicate the documents or to disclose in part of, or the whole of, any of the information contained herein to any third party without receiving before hand, written permission from the submitting company.

Created	Printed	Document Number	Revision	Manufacturer
2010/5/27	2017/2/6		A	RFcore co.,Ltd
File : RCA19-22H42A General Spec.docx				

The Specifications is subject to change before finalization

Customer Service: Tel. 82-31-708-7575

Email: sales@rfcore.com

<http://www.rfcore.com>

Broadband High Power Amplifier

Product Name : RCA19-22H42A

Doc. Name : General Spec.

ELECTRICAL SPECIFICATIONS

Parameter	Specification	Remark
Frequency Range	1900 ~ 2200 MHz	
Saturated Output Power	15 W min.	CW, Room Temperature
Gain	38 dB min.	Input level = -15dBm, Room Temperature
Gain Flatness	Peak to Peak 3.0 dB	Input level = -15dBm, Room Temperature Over Freq. band
Input / Output VSWR	Less than 1.5 : 1	
Maximum Input Power	7dBm	
DC Current Consumption	3.0 A max.	@ Pout = 15W
DC Input Voltage	27 ± 1.0Vdc	
I/O Map	<ol style="list-style-type: none"> 1. Enable(Active Low) 2. Power Monitor 3. N.C 4. Reflect Power Monitor 5. VSWR Fail Alarm 6,7 Vcc 8,9 GND 	(Enable = 0V, Disable = 5V) pull-up @ 5V with 10k ohm Log slop detector, Vpin2=4 ±0.1 @ 42dBm , slope:0.1V/dB Vpin2= 4 -(42-Pout)*0.1±0.1V Linear slop detector : diode type Reflected Power = 37.5 ± 1.5dBm 36dBm < Reflect Power < 39dBm

2

ENVIRONMENTAL SPECIFICATIONS

Parameter	Specification	Remark
Operating Case Temperature	-20 ~ 60 °C	
Storage Temperature	-40 ~ 85 °C	

MECHANICAL SPECIFICATIONS

Parameter	Specification	Remark
Dimension	95 x 80 x 22 mm	
RF Input / Output Connector	SMA – Female	
DC Connector & Control Connector	D-Sub 9Pin Male	
Cooling	Adequate Heat-sink required	

Created	Printed	Document Number	Revision	Manufacturer
2010/5/27	2017/2/6		A	RFcore co.,Ltd
File : RCA19-22H42A General Spec.docx				

The Specifications is subject to change before finalization

Customer Service: Tel. 82-31-708-7575

Email: sales@rfcore.com

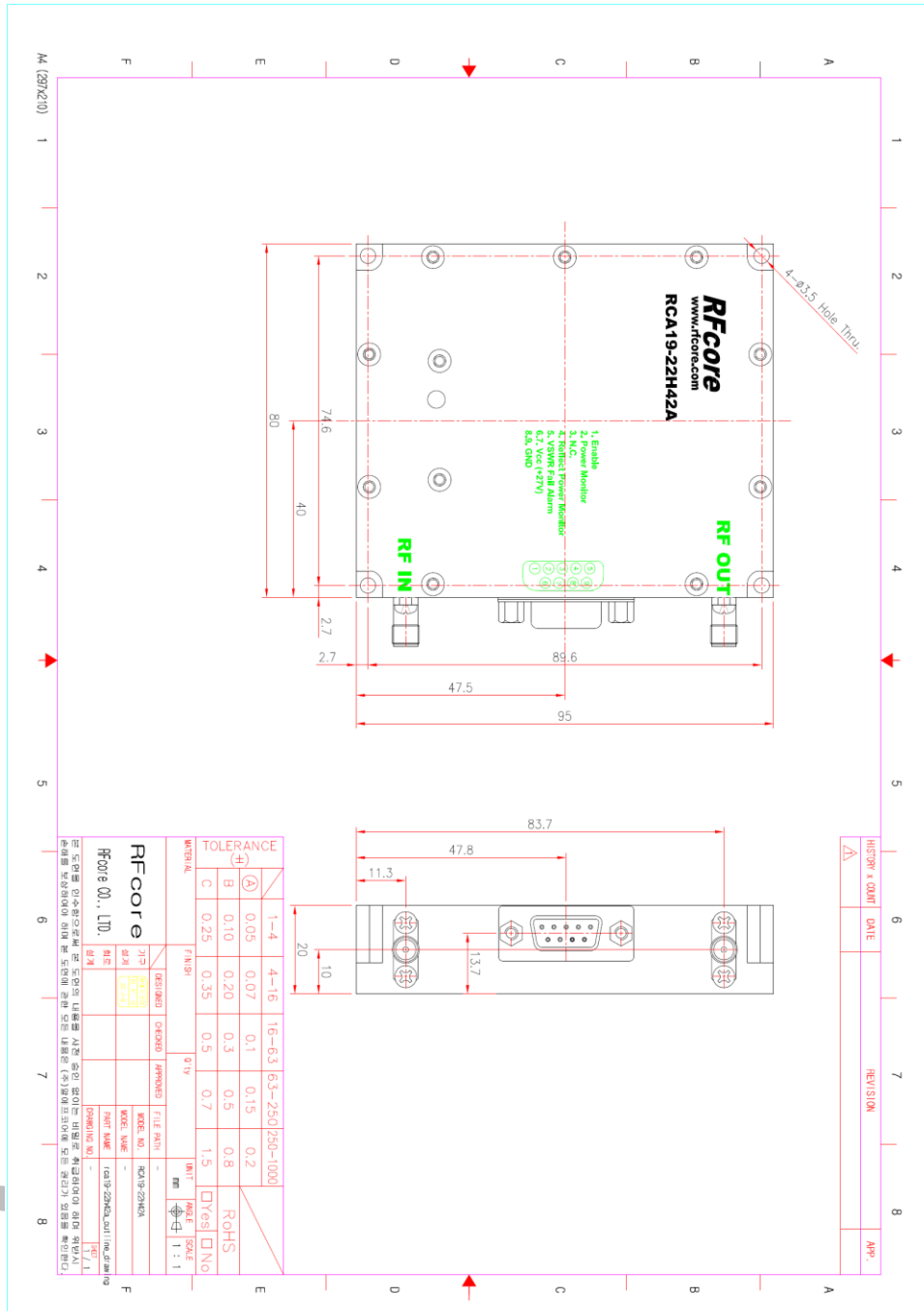
http://www.rfcore.com

Broadband High Power Amplifier

Product Name : RCA19-22H42A

Doc. Name : General Spec.

MECHANICAL DRAWING



Created	Printed	Document Number	Revision	Manufacturer
2010/5/27	2017/2/6		A	RFcore co.,Ltd
File : RCA19-22H42A General Spec.docx				

The Specifications is subject to change before finalization

Customer Service: Tel. 82-31-708-7575

Email: sales@rfcore.com

http://www.rfcore.com