

Band-Specific High Power Amplifier

Product Name : RCA2600H37A1

Doc. Name : General Spec.

RoHs
compliant

General Specification for RCA2600H37A1

1

RESTRICTION ON USE, DUPLICATION, OR DISCLOSURE OF PROPRIETARY INFORMATION

This document contains proprietary information, which is the sole property of Rfcore co., LTD.

The document is submitted to the recipient for his use only.

By receiving this document the recipient undertakes not to duplicate the documents or to disclose in part of, or the whole of, any of the information contained herein to any third party without receiving before hand, written permission from the submitting company.

Created	Printed	Document Number	Revision	Manufacturer
2015/1/26	2017/2/6		C	RFcore co.,Ltd
File : 1AM0000273(RCA2600H37A1) General Spec.docx				

The Specifications is subject to change before finalization

Customer Service: Tel. 82-31-708-7575

Email: sales@rfcore.com

<http://www.rfcore.com>

Band-Specific High Power Amplifier

Product Name : RCA2600H37A1

Doc. Name : General Spec.

ELECTRICAL SPECIFICATIONS		@ 50 Ohms load, 28 Vdc, Tc = 35 °c
Parameter	Specification	Remark
Frequency Range	2620 ~ 2690 MHz	
Saturated Output Power	5 W(37dBm) min.	CW
Gain @ Center frequency	30 ± 1.0 dB	Input level = -15dBm
Gain Flatness	Peak to Peak 2.0 dB	Input level = -15dBm
Input VSWR	Less than 1.5 : 1	
Input Power for rated output power	10 dBm	
Maximum Input Power for no damage	13 dBm	
Enable/Disable Switching Time	Less than 10 uS	
DC Input Voltage	28 ± 1.0Vdc, 5 ± 1.0Vdc	
DC Current Consumption(+28V)	700 mA max.	480 mA typ.
DC Current Consumption(+5V)	200 mA max.	140 mA typ.
RF Input Signal Format	CW	
I/O Map(Micro D-SUB 9Pin)	1. GND	
	2. DC +5V	
	3. DC +28V	
	4. Enable	Pulled – up with 10Kohm Open or High(DC +5V) w/o EMI filter(applys capacitors 10pF and 33pF instead of EMI filter)
	5. Reflected Power Monitor	
	6. Forward Power Monitor	
	7. N.C	
	8. N.C	
	9. N.C	

2

ENVIRONMENTAL SPECIFICATIONS		
Parameter	Specification	Remark
Operating Case Temperature	-20 ~ 75 °C	
Storage Temperature	-40 ~ 85 °C	

Created	Printed	Document Number	Revision	Manufacturer
2015/1/26	2017/2/6		C	RFcore co.,Ltd
File : 1AM0000273(RCA2600H37A1) General Spec.docx				

The Specifications is subject to change before finalization

Customer Service: Tel. 82-31-708-7575

Email: sales@rfcore.com

http://www.rfcore.com

Band-Specific High Power Amplifier

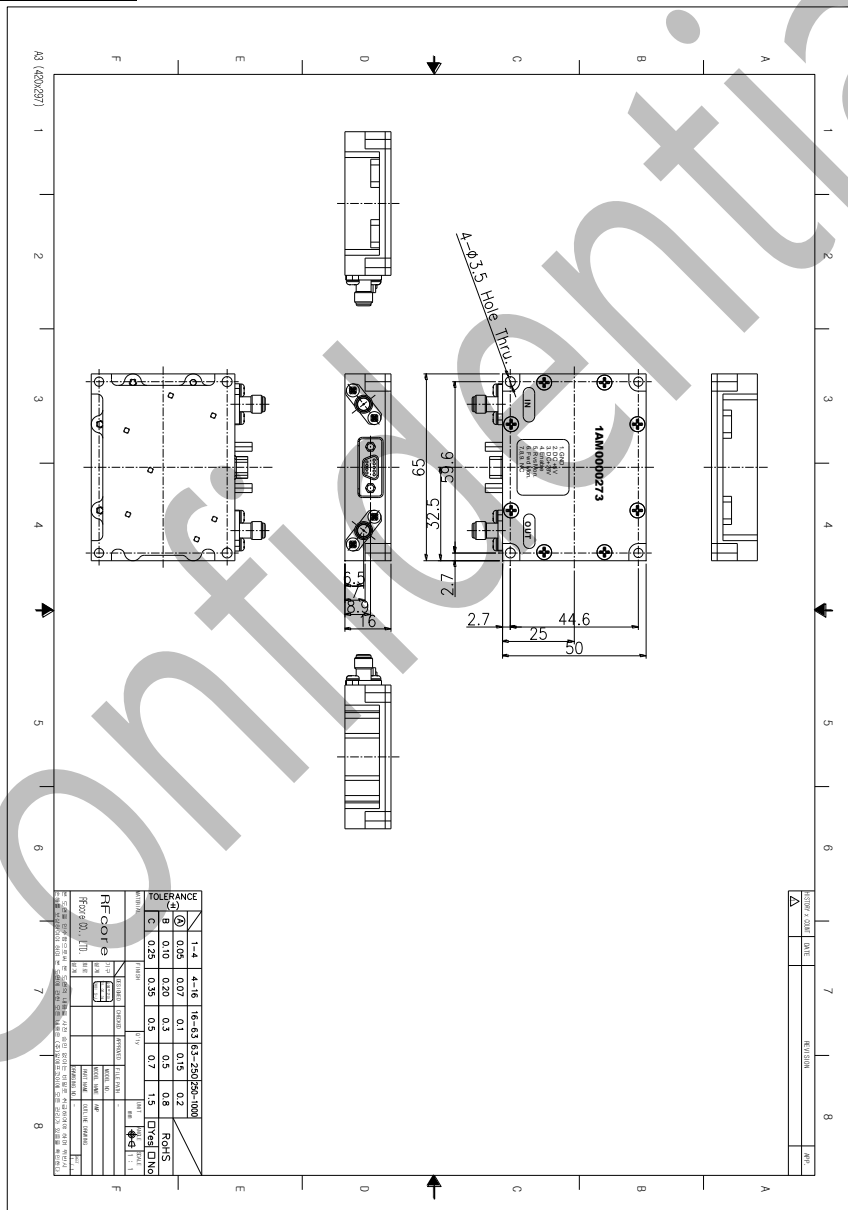
Product Name : RCA2600H37A1

Doc. Name : General Spec.

MECHANICAL SPECIFICATIONS

Parameter	Specification	Remark
Dimension	50 x 65 x 16 mm	
Weight	Less than 100 g	
RF Input / Output Connector	SMA – Female	
Cooling	Adequate Heat-sink required	

MECHANICAL DRAWING



DRAWING REFERNECE: This is subject to change without notice.

Created	Printed	Document Number	Revision	Manufacturer
2015/1/26	2017/2/6		C	RFcore co.,Ltd

File : 1AM000273(RCA2600H37A1) General Spec.docx

The Specifications is subject to change before finalization

Customer Service: Tel. 82-31-708-7575

Email: sales@rfcore.com

http://www.rfcore.com