

Band-Specific High Power Amplifier

Product Name : RCA2100H44CWC1

Doc. Name : General Spec.

General Specification for RCA2100H44CWC1

RoHs
compliant

1

RESTRICTION ON USE, DUPLICATION, OR DISCLOSURE OF PROPRIETARY INFORMATION

This document contains proprietary information, which is the sole property of RFcore co., LTD.

The document is submitted to the recipient for his use only.

By receiving this document the recipient undertakes not to duplicate the documents or to disclose in part of, or the whole of, any of the information contained herein to any third party without receiving before hand, written permission from the submitting company.

Created	Printed	Document Number	Revision	Manufacturer
2015/6/4	2017/2/6		C	RFcore co.,Ltd
File : RCA2100H44CWC1 General Spec.docx				

The Specifications is subject to change before finalization

Customer Service: Tel. 82-31-708-7575

Email: sales@rfcore.com

<http://www.rfcore.com>

Band-Specific High Power Amplifier

Product Name : RCA2100H44CWC1

Doc. Name : General Spec.

ELECTRICAL SPECIFICATIONS

Parameter	Specification	Remark
Frequency Range	2110 ~ 2170 MHz	
Saturated Output Power	25 W min	CW, Room Temp.
Small Signal Gain @ Center Frequency	45 ± 1.0 dB	Input = -15dBm , Room Temp.
Large Signal Gain	44 dB min.	Input = 0 dBm
Gain Flatness	Peak to Peak 2.0 dB	Input = -15dBm, Over Freq. Band, Room Temp.
Maximum Input Power	2 dBm max.	
Input / Output VSWR	Less than 1.5 : 1	
Maximum load VSWR for amplifier survival	10 : 1	
Enable / Disable time	10uS max.	
DC Input Current	3 A max	@ Pout = 25W Room Temp.
DC Input Voltage	+28 ± 1.0 Vdc	
RF Input Signal Format	CW	
I/O Map	1. Temperature Monitor	VT={0.02(V) x T(°C)}+1(V)
	2. Power Monitor : Log Slope detector	@CW 44dBm, slope : 0.1VdB Vpin2=4-(44-Pout)x0.1±0.1V
	3, 8. N.C	
	4. Reflected Power Monitor	Vpin4=1.4V±0.1V Reflect power=39.5±1.5dBm
	5. VSWR Fail Alarm	38dBm<Reflect power<41dBm
	6. Vcc +28V	
	7. GND	
	9. Enable (Active low)	pulled-up@5V with 10KΩ

ENVIRONMENTAL SPECIFICATIONS

Parameter	Specification	Remark
Operating Ambient Temperature	-20 ~ 75 °C	
Storage Temperature	-40 ~ 80 °C	

Created	Printed	Document Number	Revision	Manufacturer
2015/6/4	2017/2/6		C	RFcore co.,Ltd
File : RCA2100H44CWC1 General Spec.docx				

The Specifications is subject to change before finalization

Customer Service: Tel. 82-31-708-7575

Email: sales@rfcore.com

http://www.rfcore.com

Band-Specific High Power Amplifier

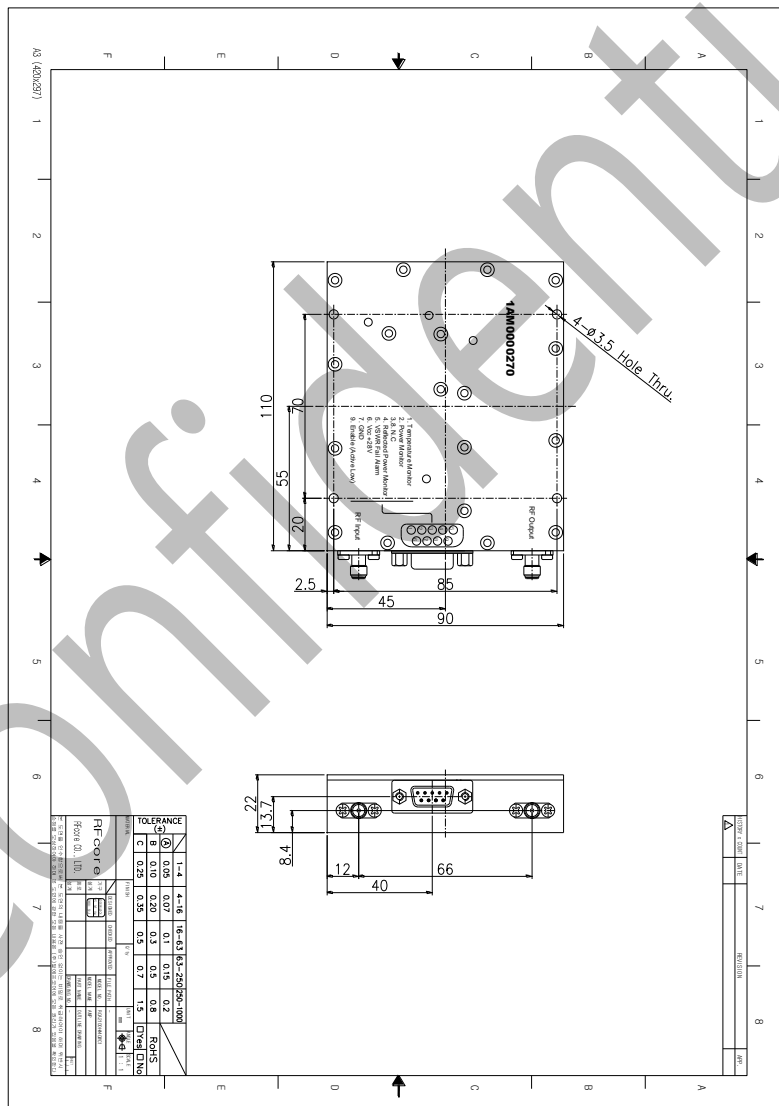
Product Name : RCA2100H44CWC1

Doc. Name : General Spec.

MECHANICAL SPECIFICATIONS

Parameter	Specification	Remark
Dimension	110 x 90 x 22 mm	
RF Input / Output Connector	SMA – Female	
DC & Interface Connector	D – Sub 9 Pin Male	

MECHANICAL DRAWING



Created	Printed	Document Number	Revision	Manufacturer
2015/6/4	2017/2/6		C	RFcore co.,Ltd
File : RCA2100H44CWC1 General Spec.docx				

The Specifications is subject to change before finalization

Customer Service: Tel. 82-31-708-7575

Email: sales@rfcore.com

http://www.rfcore.com