

Band-Specific High Power Amplifier

Product Name : RCA900H42CW

Doc. Name : General Spec.

<p style="text-align: center;">General Specification for RCA900H42CW</p>

1

<p style="text-align: center;">RESTRICTION ON USE, DUPLICATION, OR DISCLOSURE OF PROPRIETARY INFORMATION</p>

This document contains proprietary information, which is the sole property of RFcore co., LTD.

The document is submitted to the recipient for his use only.

By receiving this document the recipient undertakes not to duplicate the documents or to disclose in part of, or the whole of, any of the information contained herein to any third party without receiving before hand, written permission from the submitting company.

Created	Printed	Document Number	Revision	Manufacturer
2010/2/19	2017/1/12		A	RFcore co.,Ltd
File : RCA900H42CW General Spec.docx				

The Specifications is subject to change before finalization

Customer Service: Tel. 82-31-708-7575

Email: sales@rfcore.com

<http://www.rfcore.com>

Band-Specific High Power Amplifier

Product Name : RCA900H42CW

Doc. Name : General Spec.

ELECTRICAL SPECIFICATIONS

Parameter	Specification	Remark
Frequency Range	925 ~ 960 MHz	
Saturated Output Power	15 W(42dBm) min	Operating Temp. , CW
Gain	38 ± 1.0 dB	Input level = -15dBm, Operating Temp.
Gain Flatness	Peak to Peak 2.0 dB	Input level = -15dBm, Operating Temp. , Over Freq. band
Gain Stability	± 1.0 dB	Operating Temp.
Input / Output VSWR	Less than 1.5 : 1	
Maximum Input Power	7 dBm	
DC Current Consumption	2.5 A maximum	@ Pout = 15W, Operating Temp.
DC Input Voltage	27 ± 1.0Vdc	
I/O Map	1. Enable(Active Low)	(Enable = 0V, Disable = 5V) pulled-up @ 5V with 10k ohm
	2. Power Monitor	Log slop detector Vpin2=4 ±0.1V @ CW 42dBm , slope:0.1V/dB Vpin2= 4 -(42-Pout)*0.1±0.1V
	3. N.C	
	4. Reflect Power Monitor	Linear slop detector : diode type Vpin4=1 ±0.1V@ Reflected Power = 37.5 ± 1.5dBm
	5. VSWR Fail Alarm	VSWR Alarm when Reflected Power > 37.5 ± 1.5dBm
	6,7 Vcc	
	8,9 GND	

2

ENVIRONMENTAL SPECIFICATIONS

Parameter	Specification	Remark
Operating Case Temperature	-20 ~ 60 °C	
Storage Temperature	-40 ~ 85 °C	

MECHANICAL SPECIFICATIONS

Parameter	Specification	Remark
Dimension	95 x 80 x 22 mm	
RF Input / Output Connector	SMA – Female	
Interface Connector	D-Sub 9Pin Male	

Created	Printed	Document Number	Revision	Manufacturer
2010/2/19	2017/1/12		A	RFcore co.,Ltd
File : RCA900H42CW General Spec.docx				

The Specifications is subject to change before finalization

Customer Service: Tel. 82-31-708-7575

Email: sales@rfcore.com

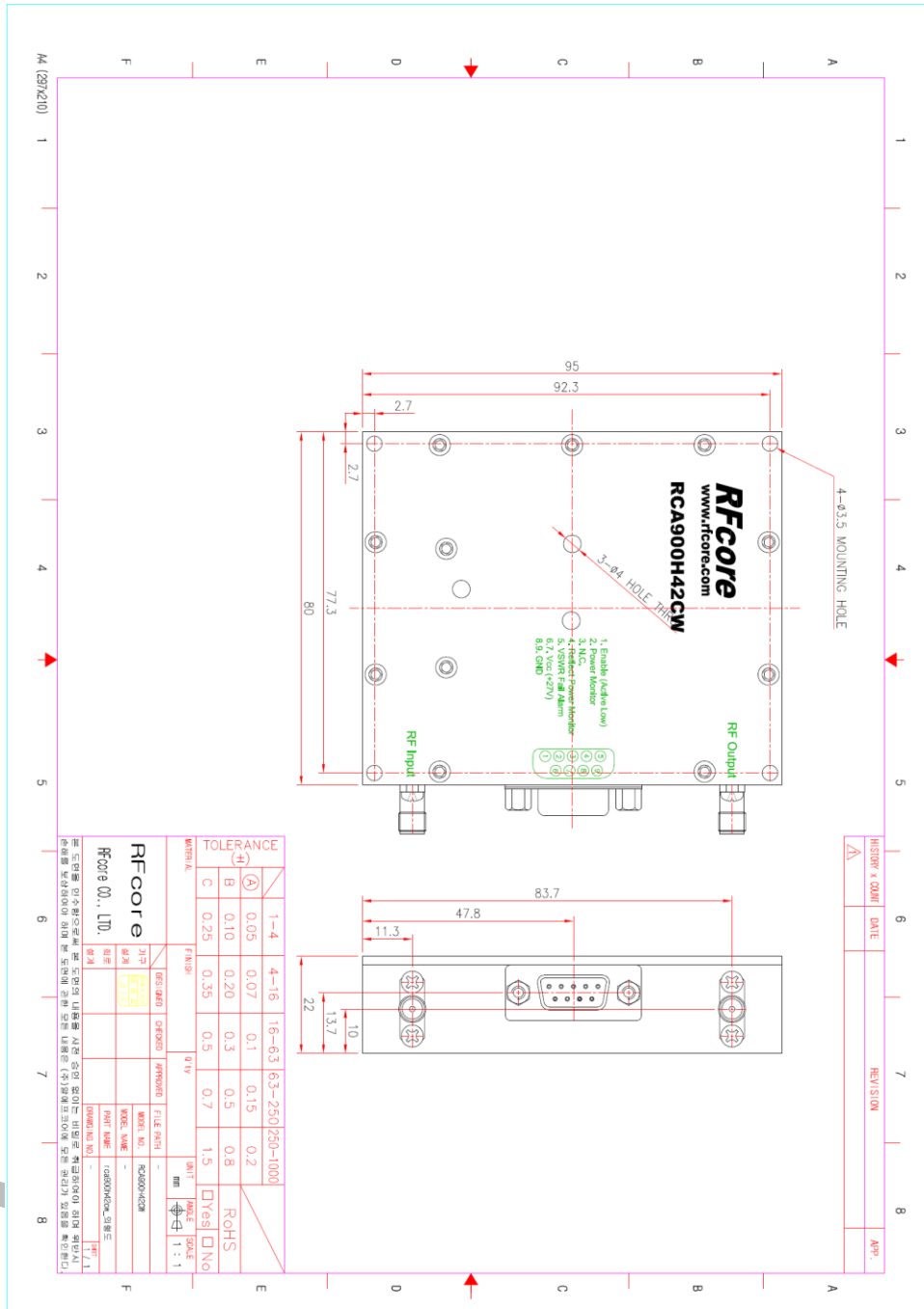
http://www.rfcore.com

Band-Specific High Power Amplifier

Product Name : RCA900H42CW

Doc. Name : General Spec.

MECHANICAL DRAWING



TOLERANCE	(A)	B	C	1-4	4-16	16-63	63-250	250-1000
(A)	0.05	0.07	0.1	0.15	0.2	0.3	0.5	0.8
B	0.10	0.20	0.3	0.5	0.8	1.5	2.0	3.0
C	0.25	0.35	0.5	0.7	1.5	2.0	3.0	5.0

FINISH	DESIGNER	CHECKER	APPROVER	FILE PATH
01V				

RF Core	기타	REVISION	DATE	REVISION	DATE

Created	Printed	Document Number	Revision	Manufacturer
2010/2/19	2017/1/12		A	RFcore co.,Ltd
File : RCA900H42CW General Spec.docx				

The Specifications is subject to change before finalization

Customer Service: Tel. 82-31-708-7575
 Email: sales@rfcore.com
 http://www.rfcore.com