

Broadband High Power Amplifier

Product Name : RCA2100H46CWB , Code Name : B1Y6SD3SI45

Doc. Name : Preliminary Short Spec.

<p style="text-align: center;">Preliminary Short Specification for RCA2100H46CWB</p>

1

<p style="text-align: center;">RESTRICTION ON USE, DUPLICATION, OR DISCLOSURE OF PROPRIETARY INFORMATION</p>

This document contains proprietary information, which is the sole property of RFcore co., LTD.

The document is submitted to the recipient for his use only.

By receiving this document the recipient undertakes not to duplicate the documents or to disclose in part of, or the whole of, any of the information contained herein to any third party without receiving before hand, written permission from the submitting company.

Created	Printed	Document Number	Revision	Manufacturer
2010/11/4	2011/9/27		A	RFcore co.,Ltd
File : RCA2100H46CWB Short Spec.docx				

The Specifications is subject to change before finalization

Customer Service: Tel. 82-31-708-7575

Email: sales@rfcore.com

<http://www.rfcore.com>

Broadband High Power Amplifier

Product Name : RCA2100H46CWB , Code Name : B1Y6SD3SI45

Doc. Name : Preliminary Short Spec.

ELECTRICAL SPECIFICATIONS		@ 50 Ohms load, Tc = 35°C
Parameter	Specification	Remark
Frequency Range	2110 ~ 2170 MHz	
Saturated Output Power	46 dBm min.	
Gain @ Center Frequency	45 ± 1.0 dB	Input = -15 dBm
Gain Flatness	Peak to Peak 2 dB	Input = -15 dBm, Over Freq Band
Gain Stability	± 1.0 dB	Operating temp.
Maximum Input Power	5 dBm max.	
Input/Output VSWR	Less than 1.5 : 1	
RF Input Signal Format	CW	
Current Consumption	4.5 A max. , 4.2 A typ.	@ 40W
DC Input Voltage	+27 ± 1.0 Vdc	

Interface Pin Description		
Connector	Description	Specification
D-Sub 9Pin Male	1. Temperature Monitor	VT= 0.02(V) * Tc(°C) + 1.0(V), Tc = Case Temperature± 5°C
	2. Forward Power Monitor	4 ± 0.1V @ CW 46dBm, slope : 0.1V/dB Vpin2 = 4-(46-Pout)x0.1±0.1V
	3. GND	
	4. Reflected Power Monitor	Vpin4 is Diode type Detector. Diode has non-linear log slope characteristic. PA shutdown when Vpin4 reach 1.4 ± 0.1Vdc @ Fcenter Note : Alarm Status is not latched. Alarm is cleared once Vpin4 go down 1.4 ± 0.1Vdc
	5. VSWR Fail Alarm	Alarm : High(5V) @ Reflected power = 10~20W @ Fcenter
	6. Vcc	
	7. Vcc	
	8. GND	
	9. Enable (Active low)	pulled-up@5V with 10KΩ

ENVIRONMENTAL SPECIFICATIONS		
Parameter	Specification	Remark
Operating Case Temperature	-20 ~ 60 °C	
Storage Temperature	-40 ~ 85 °C	

Created	Printed	Document Number	Revision	Manufacturer
2010/11/4	2011/9/27		A	RFcore co.,Ltd
File : RCA2100H46CWB Short Spec.docx				

The Specifications is subject to change before finalization

Customer Service: Tel. 82-31-708-7575

Email: sales@rfcore.com

http://www.rfcore.com

Broadband High Power Amplifier

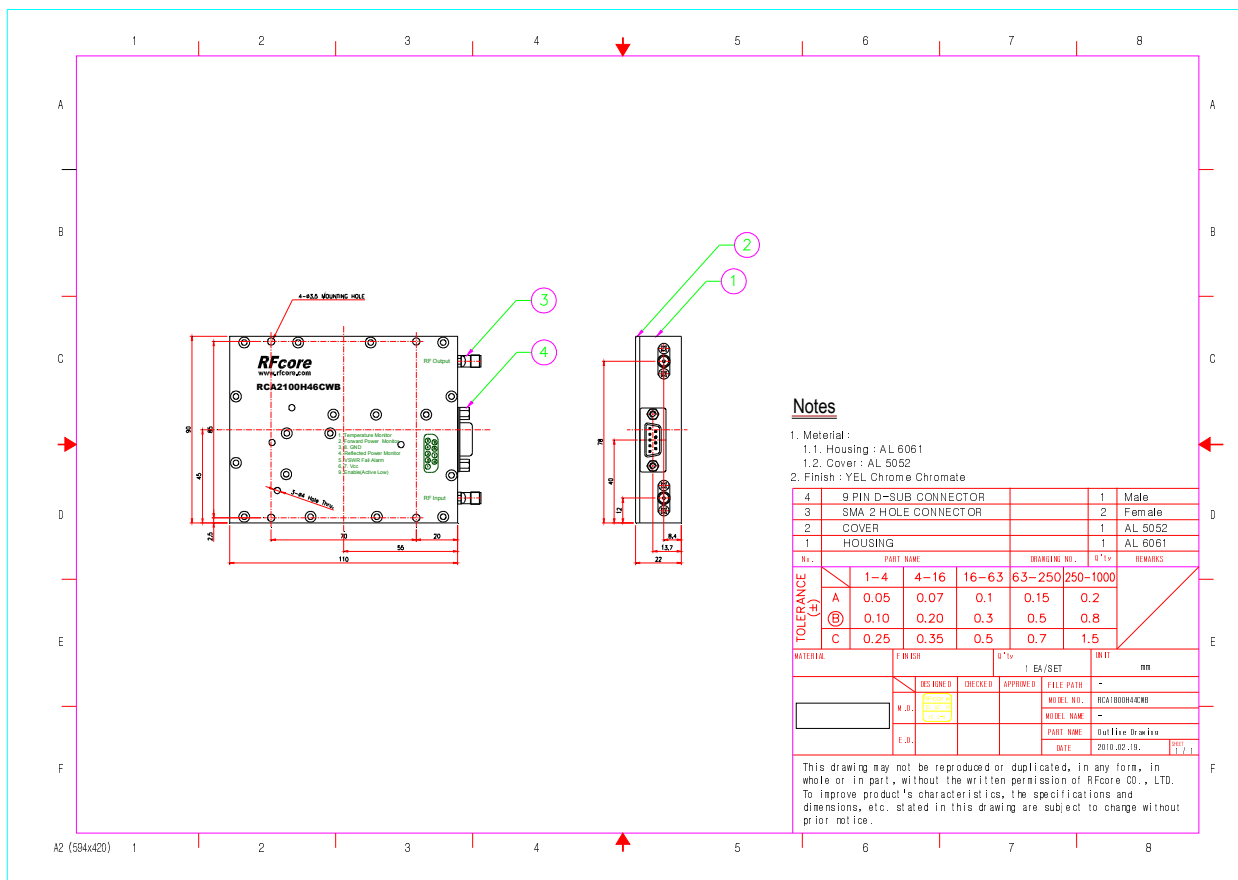
Product Name : RCA2100H46CWB , Code Name : B1Y6SD3SI45

Doc. Name : Preliminary Short Spec.

MECHANICAL SPECIFICATIONS

Parameter	Specification	Remark
Dimension	110 * 90 *22 mm	
RF Input Connector	SMA Female	
RF Output Connector	SMA Female	
DC Power & Control Connector	D – SUB 9Pin Male	
Cooling	Adequate Heat-sink required	

MECHANICAL DRAWING



3

Created	Printed	Document Number	Revision	Manufacturer
2010/11/4	2011/9/27		A	RFCore co.,Ltd
File : RCA2100H46CWB Short Spec.docx				

The Specifications is subject to change before finalization

Customer Service: Tel. 82-31-708-7575

Email: sales@rfcore.com

http://www.rfcore.com