

Broadband High Power Amplifier

Product Name : RCA07-10H52A

Doc. Name : Preliminary Short Spec.

<p style="text-align: center;">Preliminary Short Specification for RCA07-10H52A</p>

1

<p style="text-align: center;">RESTRICTION ON USE, DUPLICATION, OR DISCLOSURE OF PROPRIETARY INFORMATION</p>

This document contains proprietary information, which is the sole property of RFcore co., LTD.

The document is submitted to the recipient for his use only.

By receiving this document the recipient undertakes not to duplicate the documents or to disclose in part of, or the whole of, any of the information contained herein to any third party without receiving before hand, written permission from the submitting company.

Created	Printed	Document Number	Revision	Manufacturer
2010/12/23	2011/9/27		A	RFcore co.,Ltd
File : RCA07-10H52A Short Spec.docx				

The Specifications is subject to change before finalization

Customer Service: Tel. 82-31-708-7575

Email: sales@rfcore.com

<http://www.rfcore.com>

Broadband High Power Amplifier

Product Name : RCA07-10H52A

Doc. Name : Preliminary Short Spec.

ELECTRICAL SPECIFICATIONS		@ 50 Ohms load, 28 Vdc, Tc = 35 °C
Parameter	Specification	Remark
Frequency Range	700 ~ 960 MHz	
Saturated Output Power	150 Watts min.	
Small Signal Gain at center frequency	55 ± 1 dB	Input Level = - 15 dBm
Small Signal Gain Flatness	Peak to Peak 5 dB	Input Level = - 15 dBm
Maximum Input Power	5 dBm max.	
DC Input Voltage	28 ± 1 V	
Current Consumption	26 A max	@ Pout = 150 W
RF Input Signal Format	CW	
I/O Map(D-Sub 9Pin Male)	2. Temperature Monitor	VT=(0.02 * Tc)+1V Tc = Case Temperature± 5°C
	3. Enable (Active Low)	Pulled up @ 5 V with 10 kohm
	5. VSWR Fail Alarm	Alarm : TTL High
	6. GND	
	7. Power Monitor	4.0 ± 0.3 V @ 52 dBm, Log slope : 0.1V/dB Vpin7 = 4.0-(52-Pout) * 0.1 ± 0.3 V
	1,4,8,9. N.C	

2

ENVIRONMENTAL SPECIFICATIONS		
Parameter	Specification	Remark
Operating Case Temperature	-20 ~ +70 °C	
Storage Temperature	-40 ~ +85 °C	

MECHANICAL SPECIFICATIONS		
Parameter	Specification	Remark
Dimension	250 * 170 * 28 mm	
Input / Output Connector	Input : SMA Female, Output : N Female	
DC Connector	3W3P(A1: +Vcc, A2: GND, A3: N.C)	
Control Connector	D-Sub 9Pin Male	
Cooling	Adequate Heat-sink required	

Created	Printed	Document Number	Revision	Manufacturer
2010/12/23	2011/9/27		A	RFcore co.,Ltd
File : RCA07-10H52A Short Spec.docx				

The Specifications is subject to change before finalization

Customer Service: Tel. 82-31-708-7575

Email: sales@rfcore.com

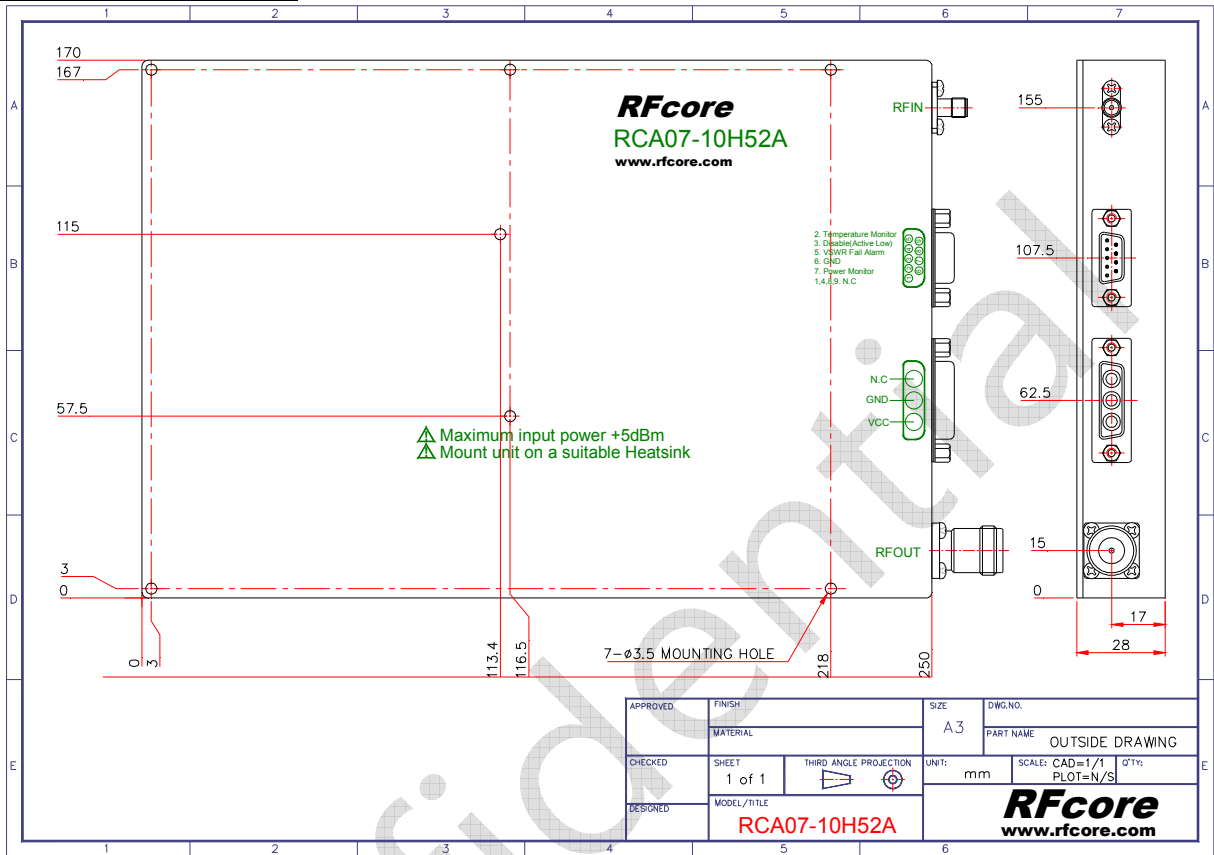
http://www.rfcore.com

Broadband High Power Amplifier

Product Name : RCA07-10H52A

Doc. Name : Preliminary Short Spec.

MECHANICAL DRAWING



3

Created	Printed	Document Number	Revision	Manufacturer
2010/12/23	2011/9/27		A	RFcore co.,Ltd
File : RCA07-10H52A Short Spec.docx				

The Specifications is subject to change before finalization

Customer Service: Tel. 82-31-708-7575

Email: sales@rfcore.com

http://www.rfcore.com