

# Broadband High Power Amplifier

Product Name : RCA10-30H50A

Doc. Name : Preliminary Short Spec.

---

**Preliminary Short Specification  
for  
RCA10-30H50A**

1

**RESTRICTION ON USE, DUPLICATION, OR DISCLOSURE OF PROPRIETARY INFORMATION**

This document contains proprietary information, which is the sole property of Rfcore co., LTD.

The document is submitted to the recipient for his use only.

By receiving this document the recipient undertakes not to duplicate the documents or to disclose in part of, or the whole of, any of the information contained herein to any third party without receiving before hand, written permission from the submitting company.

| Created                             | Printed   | Document Number | Revision | Manufacturer          |
|-------------------------------------|-----------|-----------------|----------|-----------------------|
| 2010/02/09                          | 2011/9/27 |                 | A        | <b>RFcore co.,Ltd</b> |
| File : RCA10-30H50A Short Spec.docx |           |                 |          |                       |

*The Specifications is subject to change before finalization*

Customer Service: Tel. 82-31-708-7575

Email: sales@rfcore.com

<http://www.rfcore.com>

# Broadband High Power Amplifier

Product Name : RCA10-30H50A

Doc. Name : Preliminary Short Spec.

## ELECTRICAL SPECIFICATIONS

| Parameter              | Specification  | Remark                            |
|------------------------|--|-----------------------------------|
| Frequency Range        | 1000 ~ 3000 MHz  |                                   |
| Output Power           | 100W typical , 80W minimum   | Tcase = 35°C                      |
| Small Signal Gain      | 50 dB min  | Input = -15dBm, Tcase = 35°C      |
| Gain Flatness          | Peak to Peak 5 dB  | Input = -15dBm,<br>Over Freq Band |
| Maximum Input Power    | 7 dBm  |                                   |
| Input VSWR             | Less than 2 : 1  |                                   |
| DC Input Current       | 20 A max [TBD]   | Tcase = 35°C                      |
| DC Input Voltage       | 28 ± 1.0 Vdc   |                                   |
| RF Input Signal Format | CW   |                                   |
| I/O Map                | <ol style="list-style-type: none"> <li>1. Enable (Enable = 0V, Disable = 5V)<br/>pulled-up @ 5V with 10k ohm</li> <li>2. Do Not Connect</li> <li>3. Fast Back-off, 5V(Back-off by 20~30dB),<br/>0V(Normal Gain)</li> <li>4. Do Not Connect</li> <li>5. Temperature Monitor VT = (0.02V *<br/>Temp°C)+1V</li> </ol> |                                   |
|                        | 6,7,8,9. Do Not Connect  |                                   |

2

## ENVIRONMENTAL SPECIFICATIONS

| Parameter                     | Specification | Remark |
|-------------------------------|---------------|--------|
| Operating Ambient Temperature | -20 ~ 60 °C   |        |
| Storage Temperature           | -40 ~ 80 °C   |        |

## MECHANICAL SPECIFICATIONS

| Parameter          | Specification                    | Remark |
|--------------------|----------------------------------|--------|
| Dimension          | 180 x 210 x 25 mm                |        |
| RF Input Connector | SMA – Female                     |        |
| Output Connector   | N-type Female                    |        |
| DC Power Connector | 3W3P (A1: 28V, A2: GND, A3: N.C) |        |
| Control Connector  | D – Sub 9 Pin Male               |        |
| Cooling            | Adequate Heat-sink required      |        |

| Created                             | Printed   | Document Number | Revision | Manufacturer          |
|-------------------------------------|-----------|-----------------|----------|-----------------------|
| 2010/02/09                          | 2011/9/27 |                 | A        | <b>RFcore co.,Ltd</b> |
| File : RCA10-30H50A Short Spec.docx |           |                 |          |                       |

*The Specifications is subject to change before finalization*

Customer Service: Tel. 82-31-708-7575

Email: sales@rfcore.com

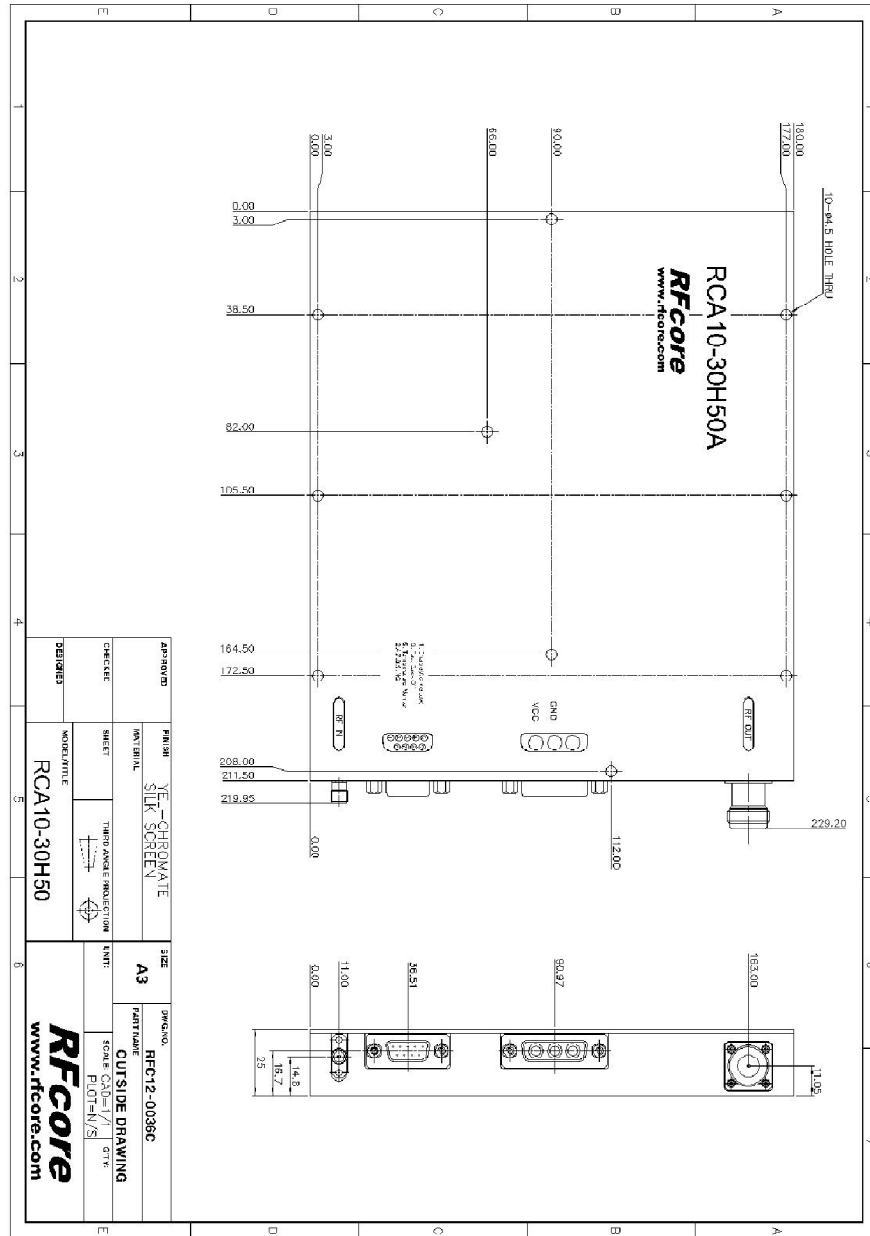
http://www.rfcore.com

# Broadband High Power Amplifier

Product Name : RCA10-30H50A

Doc. Name : Preliminary Short Spec.

## MECHANICAL DRAWING



| Created                             | Printed   | Document Number | Revision | Manufacturer   |
|-------------------------------------|-----------|-----------------|----------|----------------|
| 2010/02/09                          | 2011/9/27 |                 | A        | Rfcore co.,Ltd |
| File : RCA10-30H50A Short Spec.docx |           |                 |          |                |

The Specifications is subject to change before finalization

Customer Service: Tel. 82-31-708-7575

Email: sales@rfcore.com

http://www.rfcore.com