

# Broadband High Power Amplifier

Product Name : RCA05-30H50A

Doc. Name : Preliminary Short Spec.

---

<p style="text-align: center;"><b>Preliminary Short Specification</b> <b>for</b> <b>RCA05-30H50A</b></p>
--

1

---

<p style="text-align: center;"><b>RESTRICTION ON USE, DUPLICATION, OR DISCLOSURE OF PROPRIETARY INFORMATION</b></p> <p>This document contains proprietary information, which is the sole property of RFcore co., LTD. The document is submitted to the recipient for his use only. By receiving this document the recipient undertakes not to duplicate the documents or to disclose in part of, or the whole of, any of the information contained herein to any third party without receiving before hand, written permission from the submitting company.</p>
---

Created	Printed	Document Number	Revision	Manufacturer
2011/4/11	2011/9/27		A	<b>RFcore co.,Ltd</b>
File : RCA05-30H50A Short Spec.docx				

*The Specifications is subject to change before finalization*

Customer Service: Tel. 82-31-708-7575

Email: [sales@rfcore.com](mailto:sales@rfcore.com)

<http://www.rfcore.com>

# Broadband High Power Amplifier

Product Name : RCA05-30H50A

Doc. Name : Preliminary Short Spec.

ELECTRICAL SPECIFICATIONS		@ 28 Vdc, 50 Ohms Load, Tc = 35 °C
Parameter	Specification	Remark
Frequency Range	500 ~ 3000 MHz	
Saturated Output Power	100 Watts min.	
Small Signal Gain	50 dB min	Input Power = - 15 dBm
Gain Flatness	Peak to Peak 6 dB	Input Power = 0 dBm
Maximum Input Power	10 dBm max	
Input VSWR	2:1 max	
DC Input Voltage	28 ± 1 V	
Current Consumption	18 A max. 14A typ.	@ 100 W
RF Input Signal Format	CW	
I/O Map(D-Sub 9Pin Male)	<ol style="list-style-type: none"> <li>1. Enable(Active Low)</li> <li>2. Reserved</li> <li>3. Reserved</li> <li>4. Reserved</li> <li>5. Temperature Monitor</li> <li>6. Do not connect</li> <li>7. Do not connect</li> <li>8. Do not connect</li> <li>9. Do not connect</li> </ol>	Pulled up @ 5 V with 10 kohm  5V(Back-off by 20~30dB), 0V(Normal Gain)  $VT = ((0.02 \text{ V} * \text{Temp}^{\circ}\text{C}) + 1 \text{ V}) \pm 0.1\text{V}$

2

ENVIRONMENTAL SPECIFICATIONS		
Parameter	Specification	Remark
Operating Case Temperature	-20 ~ 60 °C	
Storage Temperature	-40 ~ 85 °C	

MECHANICAL SPECIFICATIONS		
Parameter	Specification	Remark
Dimension	210 * 350 * 30 mm	
Input Connector	SMA Type Female	
Output Connector	N Type Female	
DC Connector	3W3(A1: VCC, A2 : GND, A3 : N.C)	
Control Connector	D-Sub 9Pin Male	
Cooling	Adequate Heat-sink required	

Created	Printed	Document Number	Revision	Manufacturer
2011/4/11	2011/9/27		A	<b>RFcore co.,Ltd</b>
File : RCA05-30H50A Short Spec.docx				

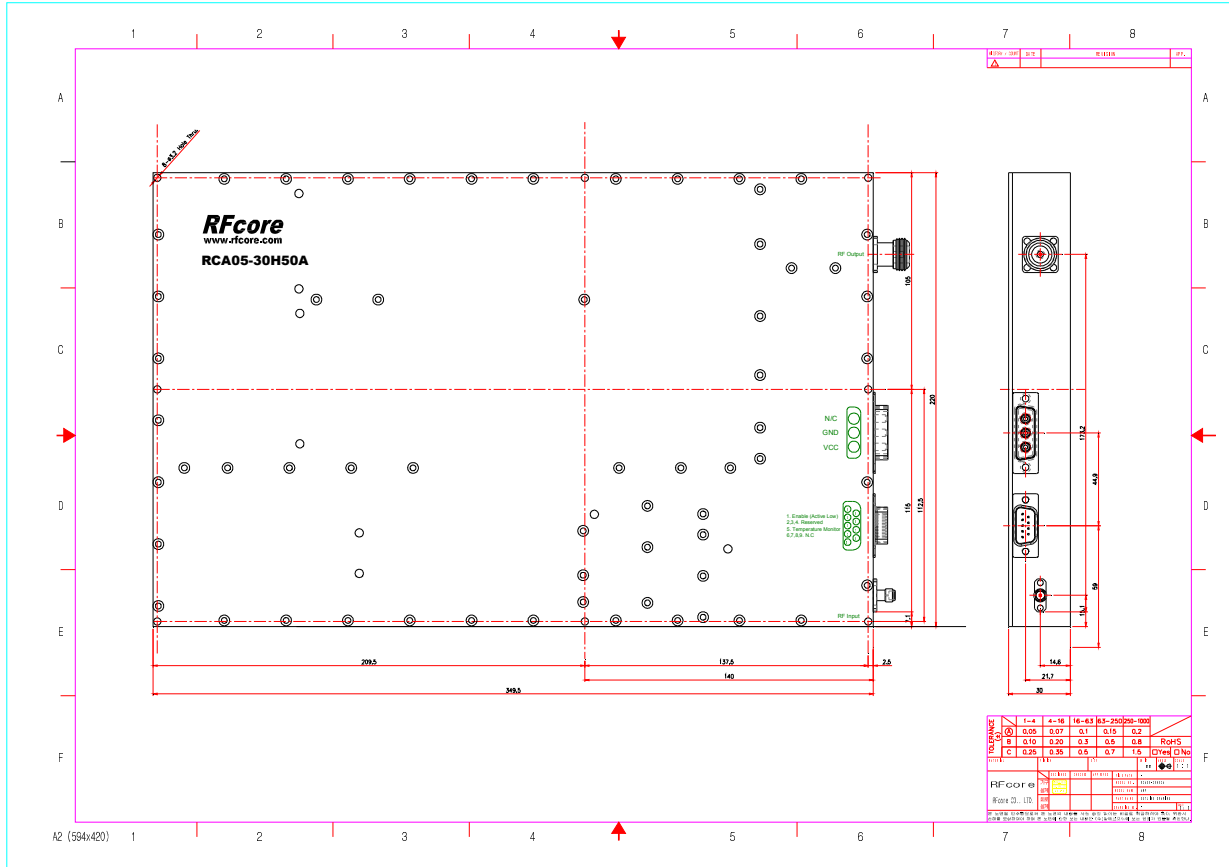
The Specifications is subject to change before finalization

# Broadband High Power Amplifier

Product Name : RCA05-30H50A

Doc. Name : Preliminary Short Spec.

## MECHANICAL DRAWING



3

Created	Printed	Document Number	Revision	Manufacturer
2011/4/11	2011/9/27		A	<b>Rfcore co.,Ltd</b>
File : RCA05-30H50A Short Spec.docx				

The Specifications is subject to change before finalization

Customer Service: Tel. 82-31-708-7575

Email: sales@rfcore.com

http://www.rfcore.com